



**FIGURE 1**  
**EMCA LEASE AREA**  
**2014 TRUE COLOR AERIAL**  
**LAKE COUNTY, FLORIDA**

1 inch = 1,700 feet





MAP SCALE IS SET FOR MAPS PRINTED ON 8.5X11 PAPER.

**LEGEND**

-  Existing Building
-  SJRWMD Pump Location

 Road Access

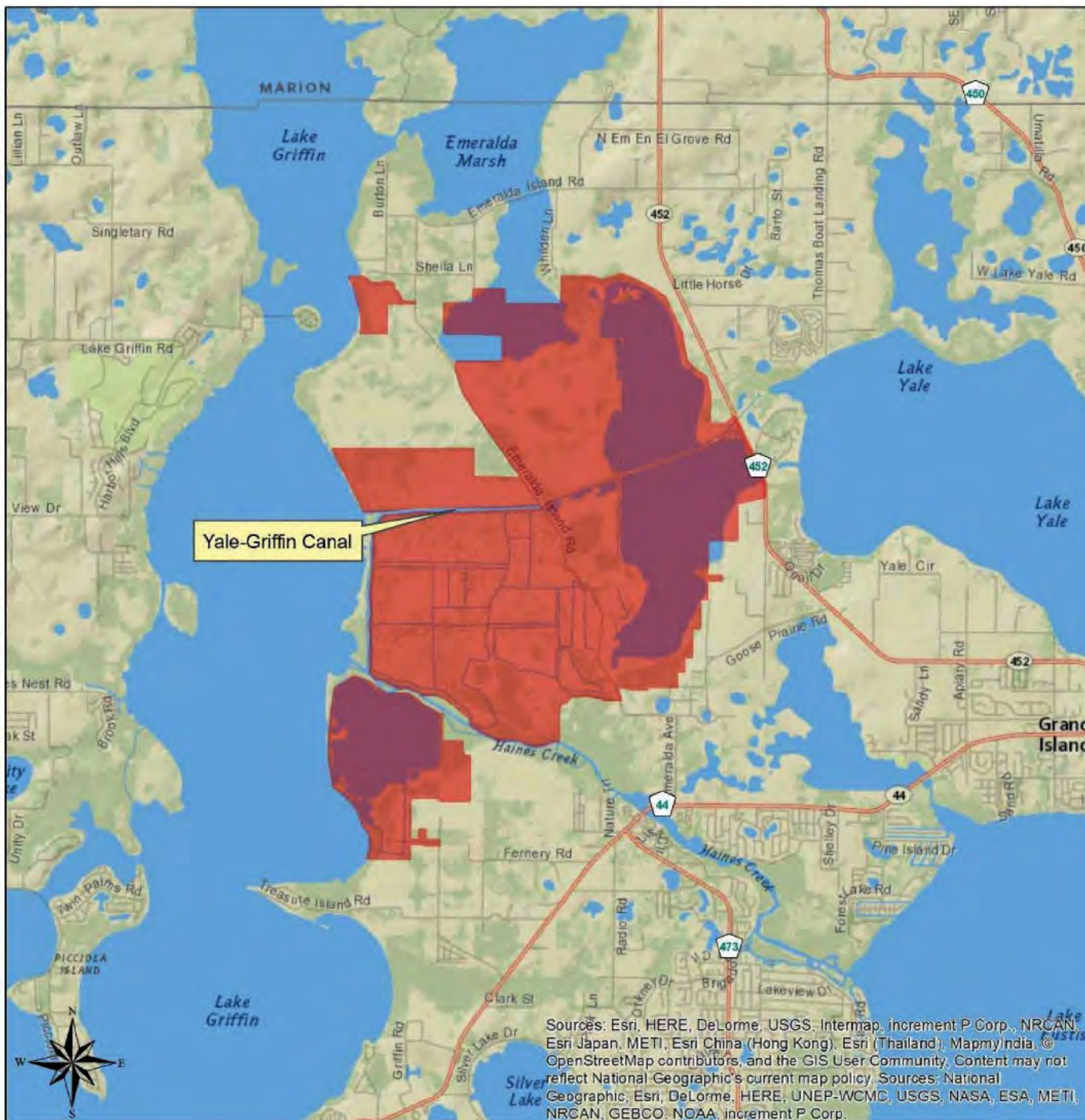
 Excavation Area  
 (+/- 605 Acres)

 Lease Area  
 (+/- 1319 Acres)



environmental consulting & design, Inc.  
 10037 40th  
 32811 NE 13th Avenue, Suite 6  
 Ocala, Florida 32809  
 352.331-1111  
 cec@ecandd.com  
 DATA SOURCES: COUNTY WMD, US DNRCS, FFWCC, SFWS/NM, FEMA, USGS/NHDANED, FDOT, FDOT FWA, FDEP, US CENSUS (TIGER 2008), FGDL & ECAD.  
 NOTE: DATA ARE PROVIDED "AS IS." ACRES ARE APPROXIMATE & GIS DERIVED.  
 PROJECTION: NAD 1983 HARN STATEPLANE FLORIDA WEST FIPS 0002 FEET





**FIGURE 2**  
**EMCA**  
**GENERAL LOCATION**  
**MAP**

**LEGEND**

Conservation Area



2401 N.E. 1<sup>st</sup> Terrace, Suite A  
 Ocala, FL 32667  
 352.371.4333  
 info@ecandd.com  
 352.201.1119  
 colab@ecandd.com

DATA SOURCES: COUNTY WMD USDANRCS FFWCC  
 SFWS/NWI FEMA USGS/NHD&NED FDOT FDOR FNAI  
 FDEP US CENSUS (TIGER 2008) FGDL & EC&D  
 NOTE: DATA ARE PROVIDED AS IS. ACRES ARE  
 APPROXIMATE & GIS DERIVED.  
 PROJECTION: NAD 1983 HARN STATEPLANE FLORIDA  
 WEST FIPS 0902 FEET



FIGURE 3

DRAINAGE BASIN  
EMCA  
LAKE COUNTY, FLORIDA



1 INCH = 15 MILES

0 3.75 7.5 15 Miles

MAP SCALE IS SET FOR MAPS PRINTED ON 8.5X11 PAPER.

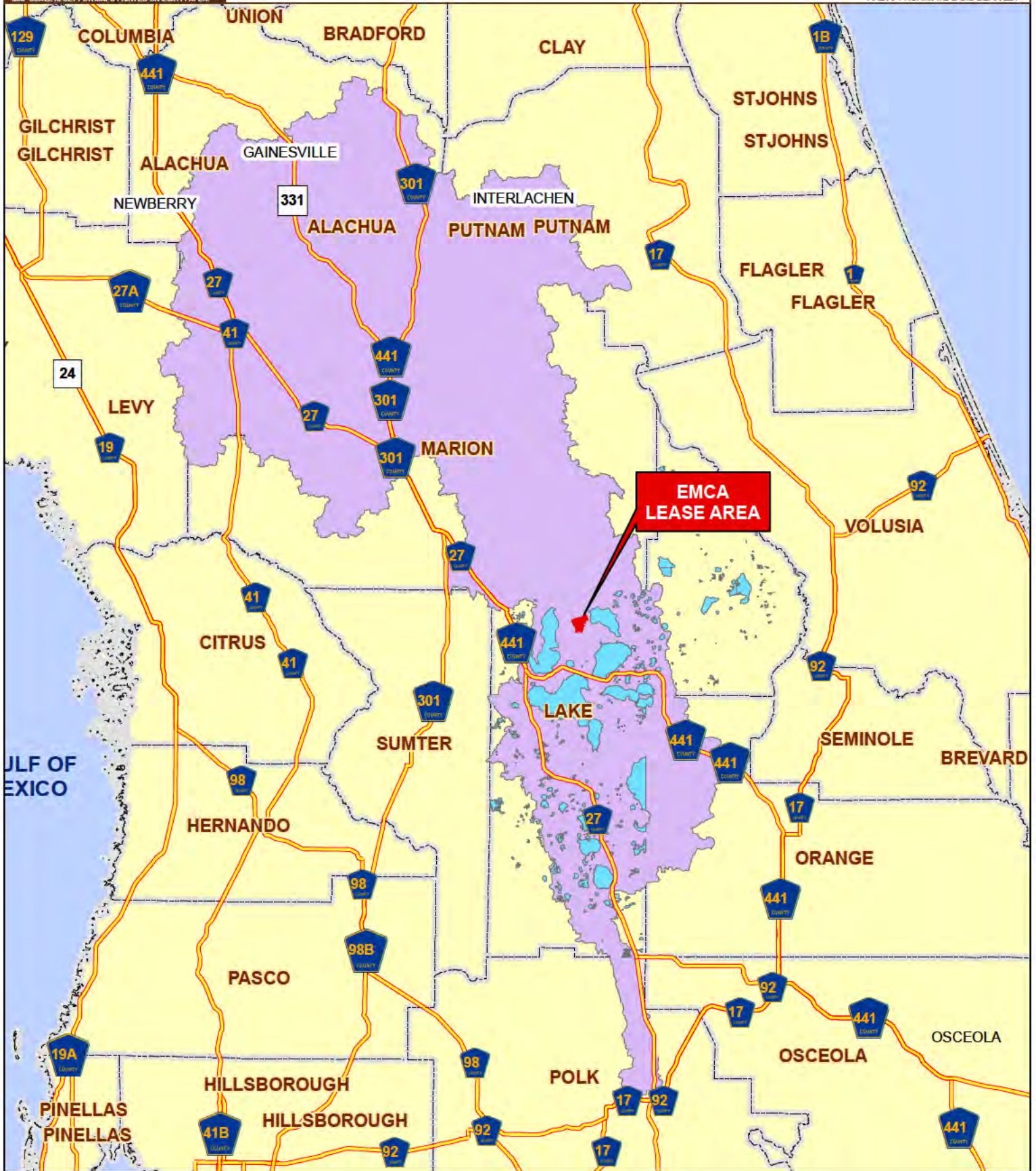
LEGEND

- US HIGHWAYS
- LEASE AREA (+/- 1319 AC.)
- HUC - 03080102
- FLORIDA COUNTIES

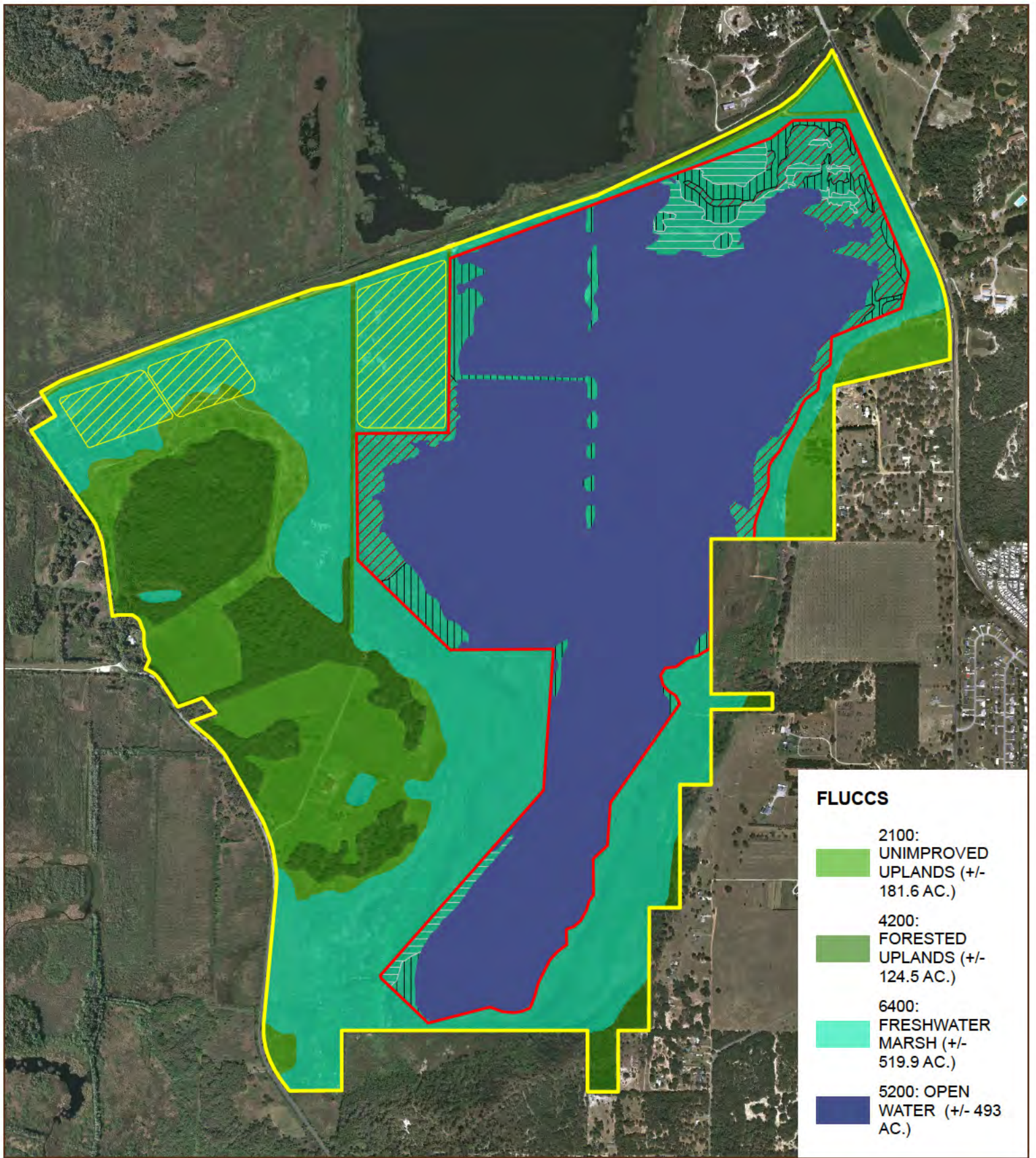


2008 16' Texas 2-Digit A  
© 2008 EC&D  
10/2007 116  
13439/000/000000

DATA SOURCES:  
USGS/NHD, FL DOT, BTS, FMAI, FDEP,  
US CENSUS (TIGER 2008), FGDL, AND EC&D.  
DATA IS PROVIDED 'AS IS.' ACRES  
ARE APPROXIMATE & GIS DERIVED.







**FLUCCS**

- 2100: UNIMPROVED UPLANDS (+/- 181.6 AC.)
- 4200: FORESTED UPLANDS (+/- 124.5 AC.)
- 6400: FRESHWATER MARSH (+/- 519.9 AC.)
- 5200: OPEN WATER (+/- 493 AC.)

**FIGURE 4**  
**PRE-EXCAVATION CONDITIONS**  
**EMCA**  
**2014 TRUE COLOR AERIAL**  
**LAKE COUNTY, FLORIDA**

1 INCH = 1,400 FEET  
 0 350 700 1,400 Feet  
 MAP SCALE IS SET FOR MAPS PRINTED ON 8.5X11 PAPER.

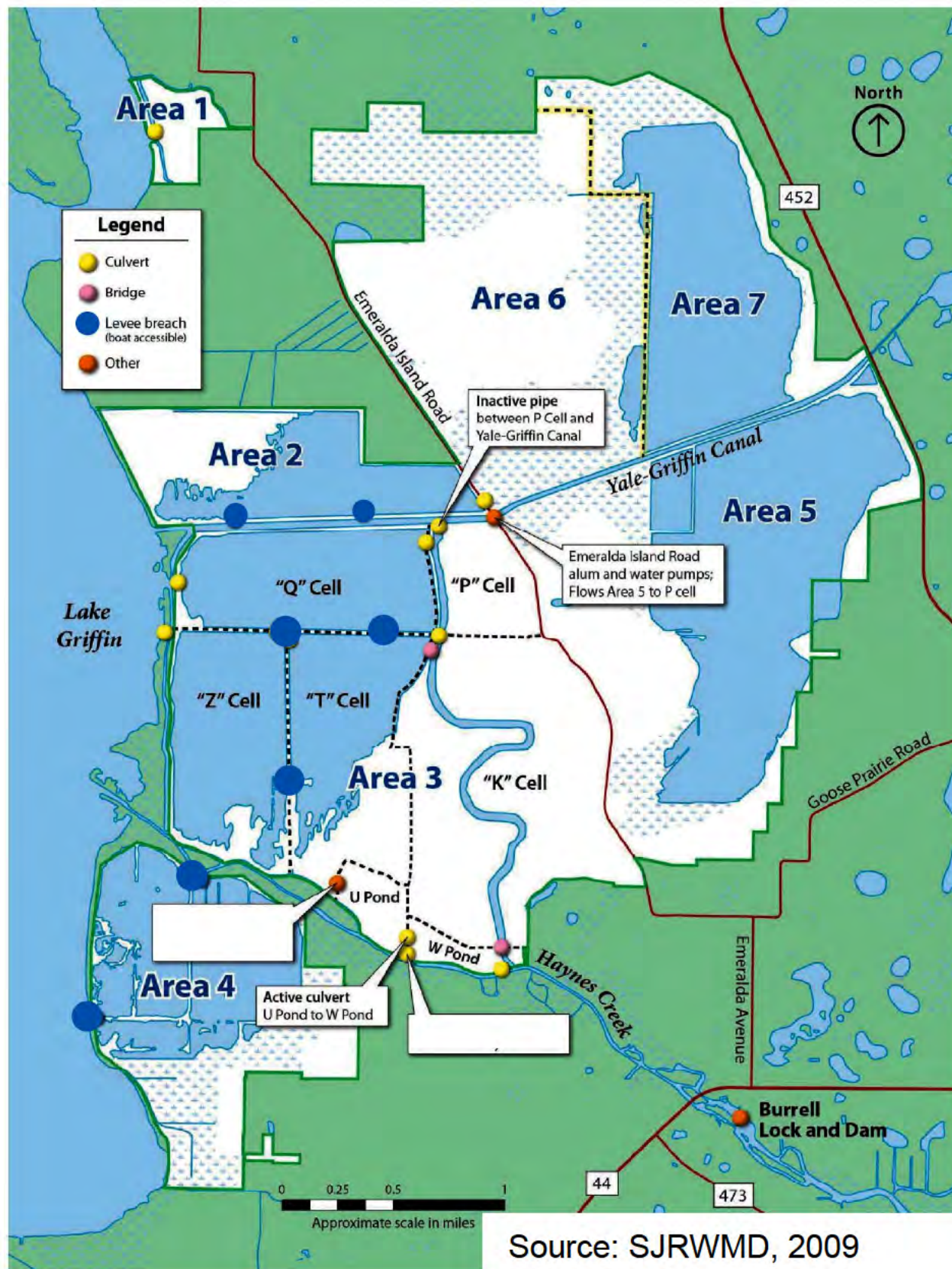
**LEGEND**

- LEASE AREA (+/- 1319 AC.)
- EXCAVATION AREA (+/- 605 AC.)
- UMAM ASSESSMENT AREAS**
- FM1 (0 - 30% COVER OF INVASIVES / NUISANCE) (+/- 24 AC.)
- FM2 (30 - 60% COVER OF INVASIVES / NUISANCE) (+/- 42 AC.)
- FM3 (60 - 90% COVER OF INVASIVES / NUISANCE) (+/- 46 AC.)
- STORAGE PONDS (+/- 63.5 AC.)



DATA SOURCES: COUNTY WMD, US DNR/FRS, FFWCC, SFWA/MI, FEMA, USGS/NHD/DEM, FDOT, FDOT, FPAI, FDEP, US CENSUS (TIGER 2008), FGDL & EC&D.  
 NOTE: DATA ARE PROVIDED AS IS. AREAS ARE APPROXIMATE & GIS DERIVED.  
 PROJECTION: NAD 1983 HARN STATEPLANE FLORIDA WEST FIPS 0002 FEET





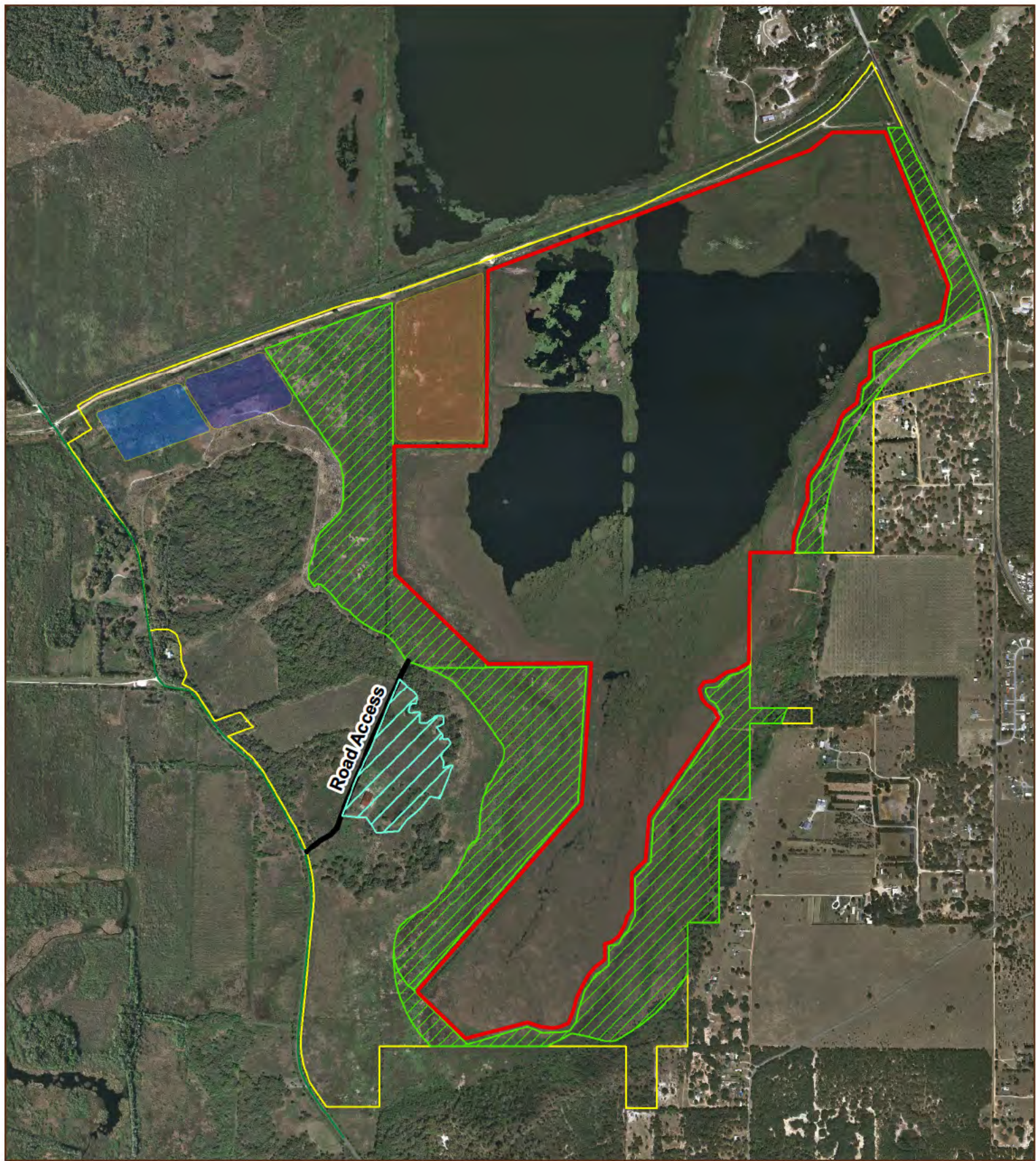
**FIGURE 5**  
EMCA  
WATER RESOURCE  
INFRASTRUCTURE MAP

MAP SCALE IS SET FOR MAPS PRINTED ON 8.5X11 PAPER.



DATA SOURCES: COUNTY WMD USDANRCS FFWCC  
SFWANR FEMA USGS/NHD/NED FOOT FLOOR FINA  
FDEP US CENSUS (TIGER 2008) FGDL & ECAD.  
NOTE: DATA ARE PROVIDED "AS IS." ACRES ARE  
APPROXIMATE & GIS DERIVED.  
PROJECTION: NAD 1983 HARN STATEPLANE FLORIDA  
WEST FIPS 0002 FEET





**FIGURE 6**  
**EXCAVATION PLAN**  
**EMCA**  
**2014 TRUE COLOR AERIAL**  
**LAKE COUNTY, FLORIDA**

1 inch = 1,400 feet

0 350 700 1,400 Feet

MAP SCALE IS SET FOR MAPS PRINTED ON 8.5X11 PAPER.

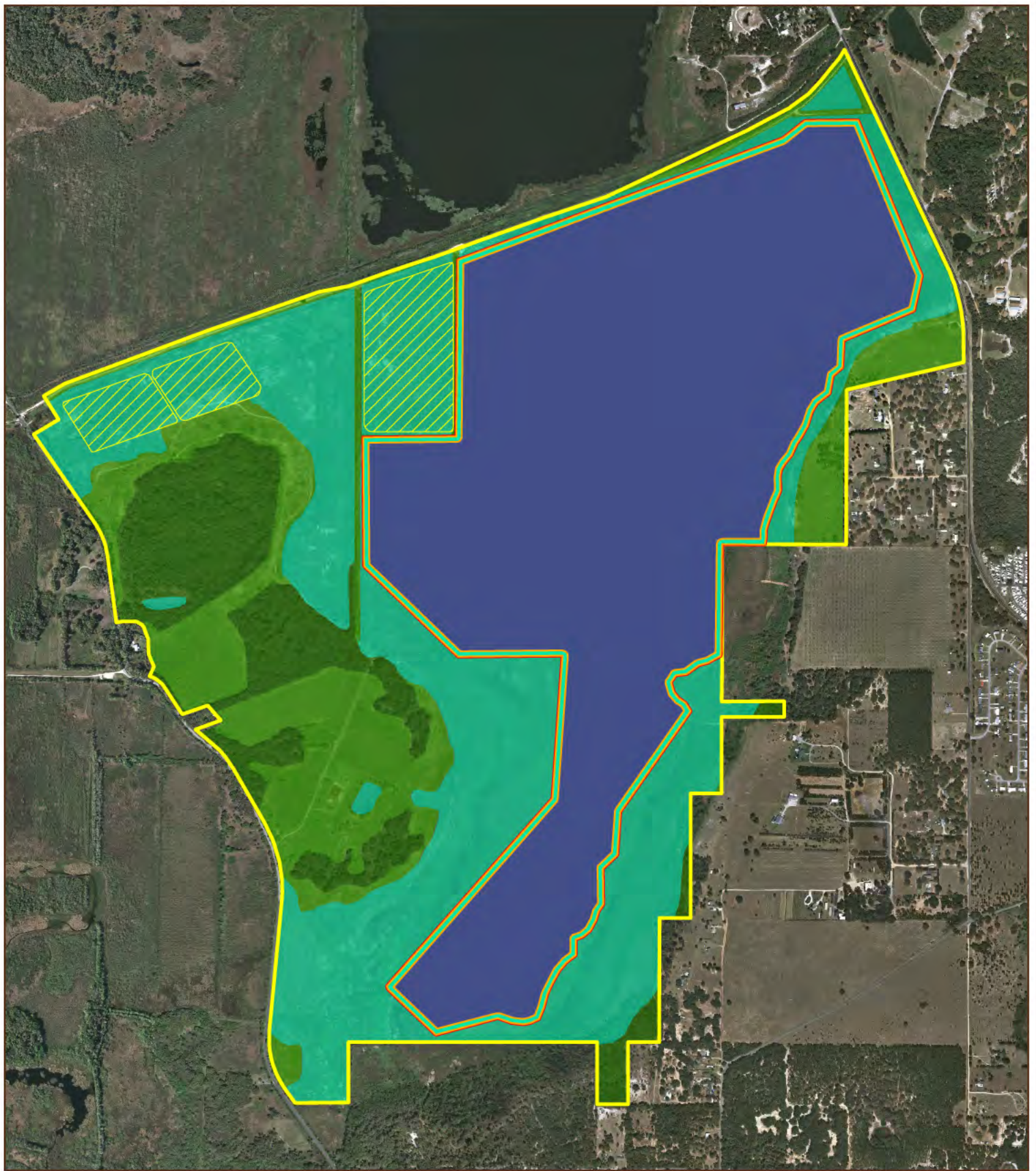
**LEGEND**

- Excavation Area (+/- 605 Acres)
- Lease Area (+/- 1319 Acres)
- ▨ Storage & Staging Area (+/- 23.7 Acres)
- Road Access
- ▨ Previously Planted Vegetation (+/- 236 Acres)
- Polishing Pond (+/- 13.7 Acres)
- Treatment Pond 1 (+/- 13.6 Acres)
- Emergency Storage Pond 1 (+/- 36.2 Acres)



DATA SOURCES: COUNTY WMD, US DNR/CRS, FFWCC, SFWS/NMI, FEMA, USGS/NHD/NEED, FDOT, FDOT/FMVA, FDEP, US CENSUS (TIGER 2008), FGDL & ECAD.  
 NOTE: DATA ARE PROVIDED AS IS. ACRES ARE APPROXIMATE & GIS DERIVED.  
 PROJECTION: NAD 1983 HARN STATEPLANE FLORIDA WEST FIPS 0002 FEET





**FIGURE 7**  
**POST-EXCAVATION CONDITIONS**  
**EMCA**  
**2014 TRUE COLOR AERIAL**  
**LAKE COUNTY, FLORIDA**

1 inch = 1,400 feet

0 350 700 1,400 Feet

MAP SCALE IS SET FOR MAPS PRINTED ON 8.5X11 PAPER.

**Legend**

- |   |  |
|---|--|
| Lease Area (+/- 1319 Acres)                 | 2100: UNIMPROVED UPLANDS (+/- 178.7 AC.) |
| Excavation Area (+/- 605 Acres)             | 4200: FORESTED UPLANDS (+/- 124.5 AC.)   |
| Wetland Reclamation Area 2 (+/- 63.5 AC.)   | 6400: FRESHWATER MARSH (+/- 448.2 AC.)   |
| Wetland Reclamation Area 1 (+/- 37.4 Acres) | 5200: OPEN WATER (+/- 567.6 Acres)       |



3401 NE 127th Avenue A  
 Gainesville, FL 32609  
 352.377.4303  
 www.ecandd.com

DATA SOURCES: COUNTY WMD, US DNR/CRS, FWCC, SPWS/NM, FEMA, USGS/NR/DAED, FDOT, FDOT/PAH, FDEP, US CENSUS (TIGER 2008), FSG&L & EC&D.  
 NOTE: DATA ARE PROVIDED AS IS. ACRES ARE APPROXIMATE & GIS DERIVED.  
 PROJECTION: NAD 1983 HARN STATEPLANE, FLORIDA WEST FIPS 0002 FEET